



Emergency Management

Status of Meteorological Data Collection Center: Experiences, Issues, Challenges

KISTERS: Christoph Schweim, Damien Pichon

**GPCC: Markus Ziese, Armin Rauthe-Schöch,
Jakub Walawender, Kira Rehfeldt**



- CEMS Meteo DCC Team – Who are we
- CEMS Meteo DCC System – Current Status
- Recent Evolution
- Planned Developments



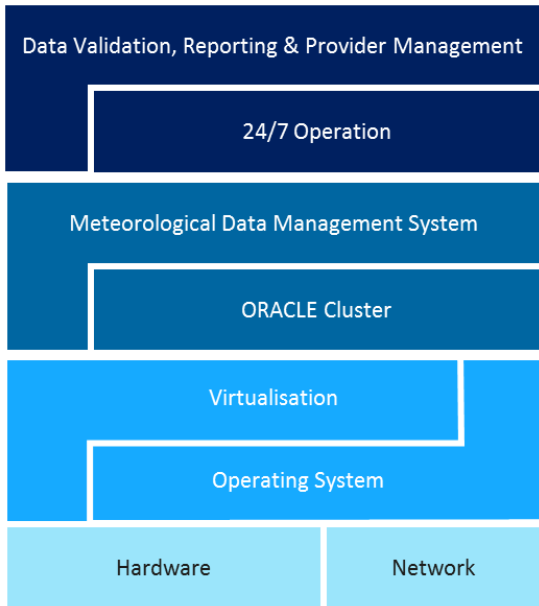
Emergency Management

C E M S M e t e o D C C T e a m – W h o a r e w e

Operated by KISTERS and GPCC



Deutscher Wetterdienst
Wetter und Klima aus einer Hand



Christoph



Kira



Armin



Markus



Damien



Jakub

... and many more in the background ...

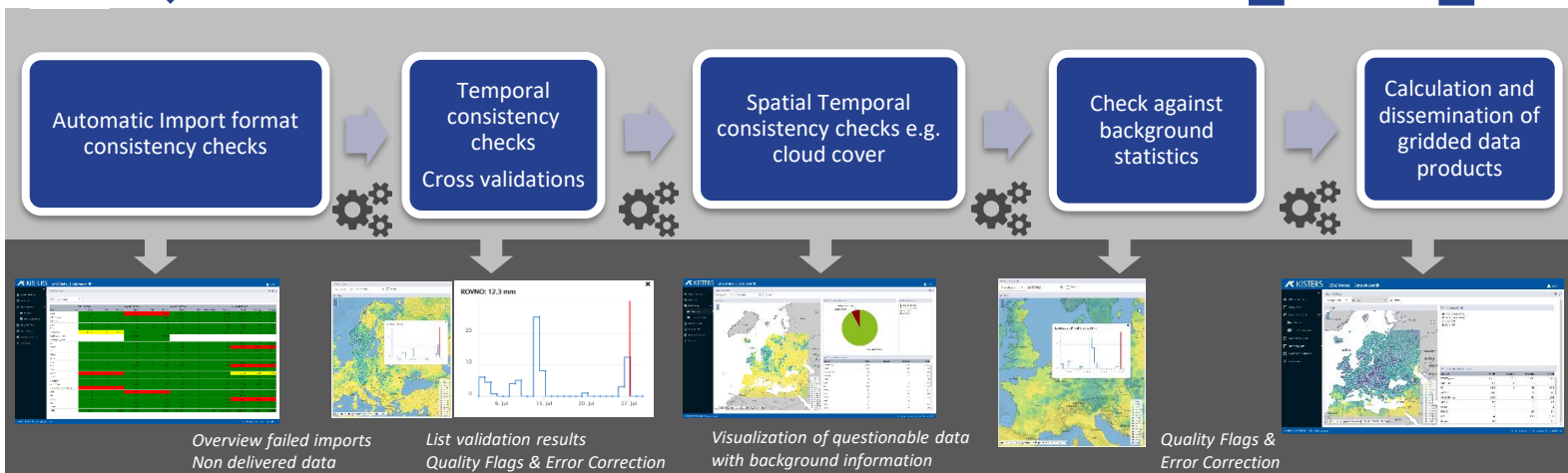
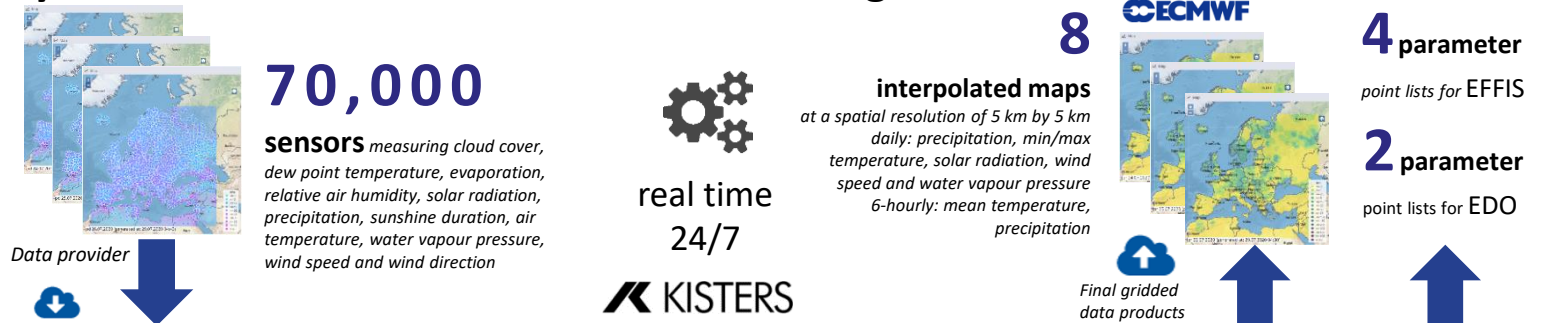




Emergency Management

CEMS Meteo DCC System – Current Status

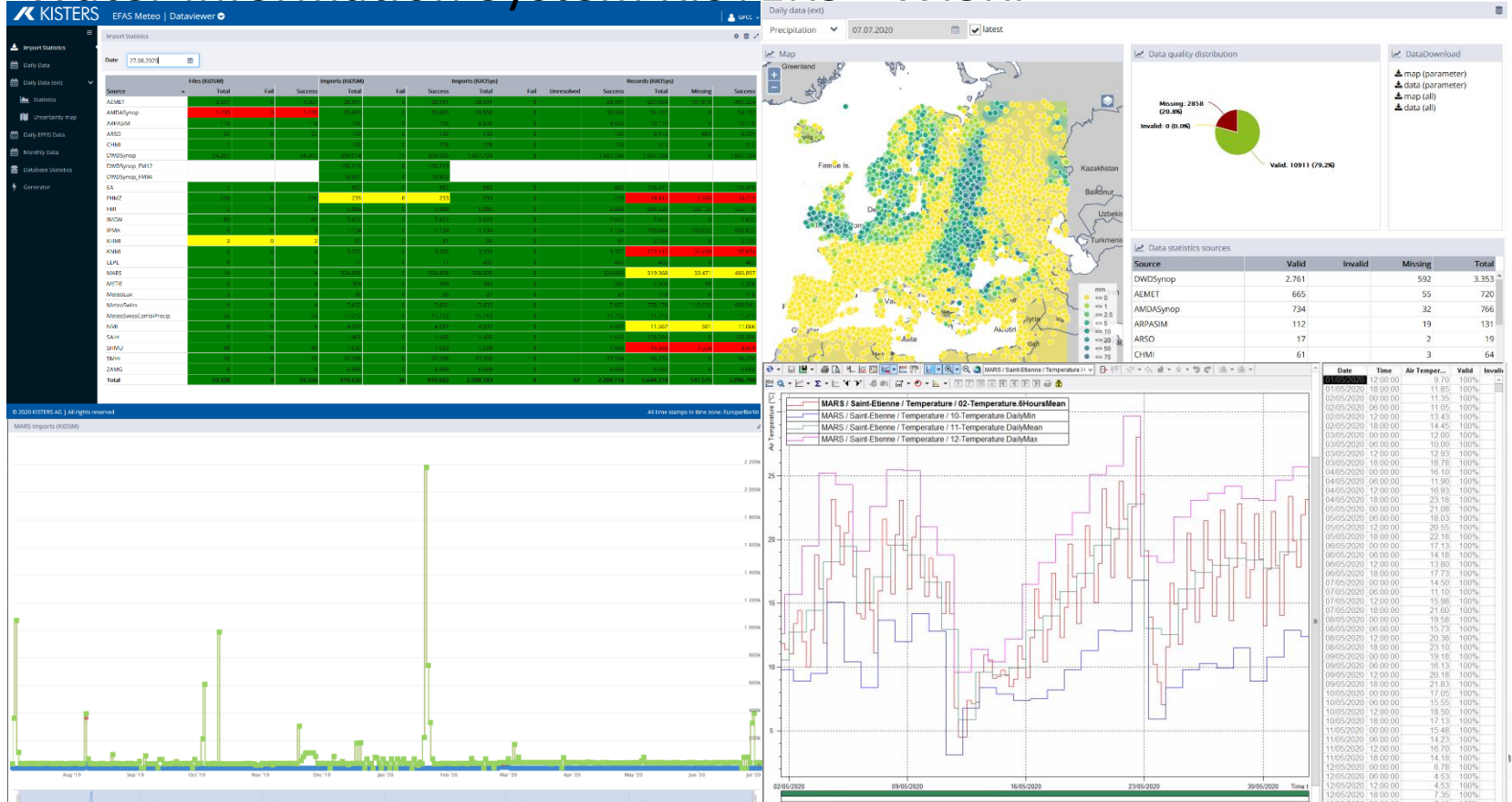
System Overview – Dataflow and Processing





Emergency Management

Water Information System KISTERS - WISKI

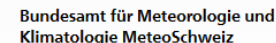
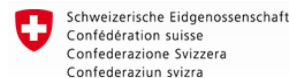




Emergency
Management

CEMS Meteo DCC System – Current Status

22 currently active data providers





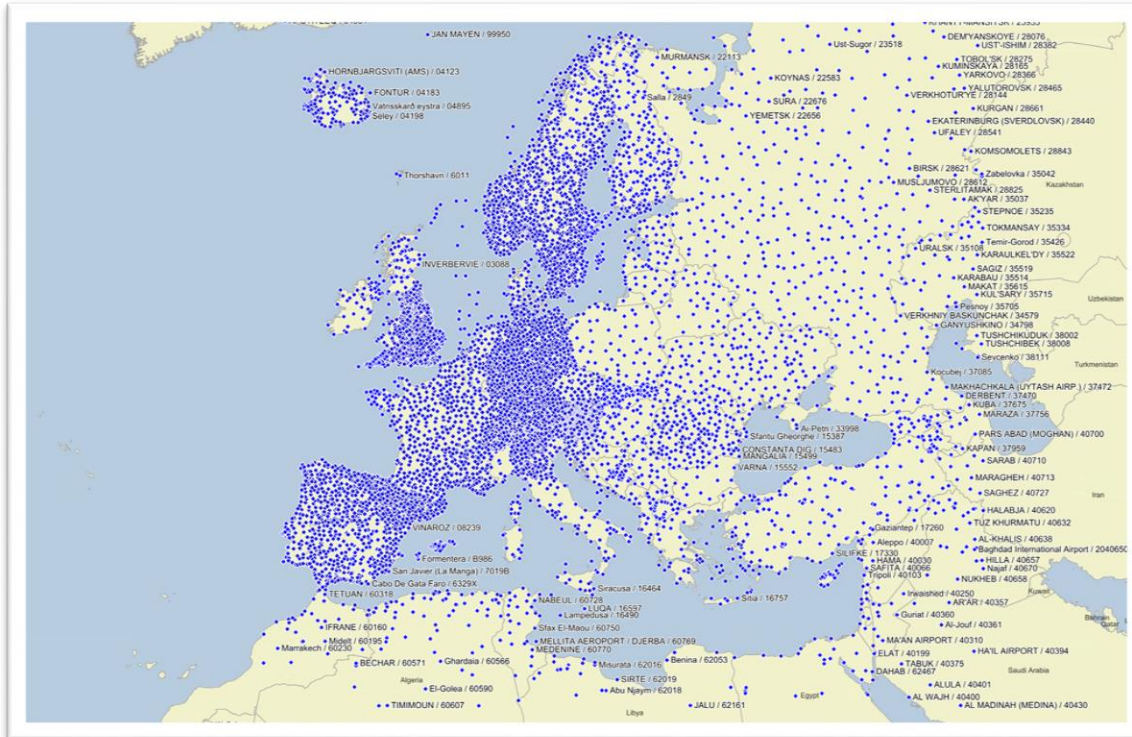
Some statistics – Current situation in the EFAS domain

24 data streams from active data providers	Active stations in EFAS domain
AEMET	750
AMDASynop	829
ARPASIM	135
ARSO	21
CHMI	64
DWDSynop	3728
EA	906
FHMZ	31
FMI	281
IMGW	62
IPMA	97
KHMI	7
KNMI	50
LEPL	19
MARS	4871
METIE	24
MeteoLux	1
MeteoSwiss	159
MeteoSwissCombiPrecip	488 (virtual)
NMI	808
SAIH	384
SHMU	64
SMHI	695
ZAMG	836 (virtual)
Total	15310

11 parameter types	Active stations in EFAS domain	6 daily grids, 8 6-hourly grids + point lists
Cloud cover	4409	
Dew point temperature	6095	
Evaporation	178	
Precipitation	15208	EFAS GRIDS + EFFIS
Relative air humidity	4488	EFFIS
Solar radiation	5295	EFAS GRIDS
Sunshine duration	2970	
Temperature (min/mean/max)	12583	EFAS GRIDS + EFFIS + EDO
Water vapour pressure	4932	EFAS GRIDS
Wind direction	6342	
Wind speed	11260	EFAS GRIDS + EFFIS



Active stations in CEMS-MDCC database (EFAS domain)



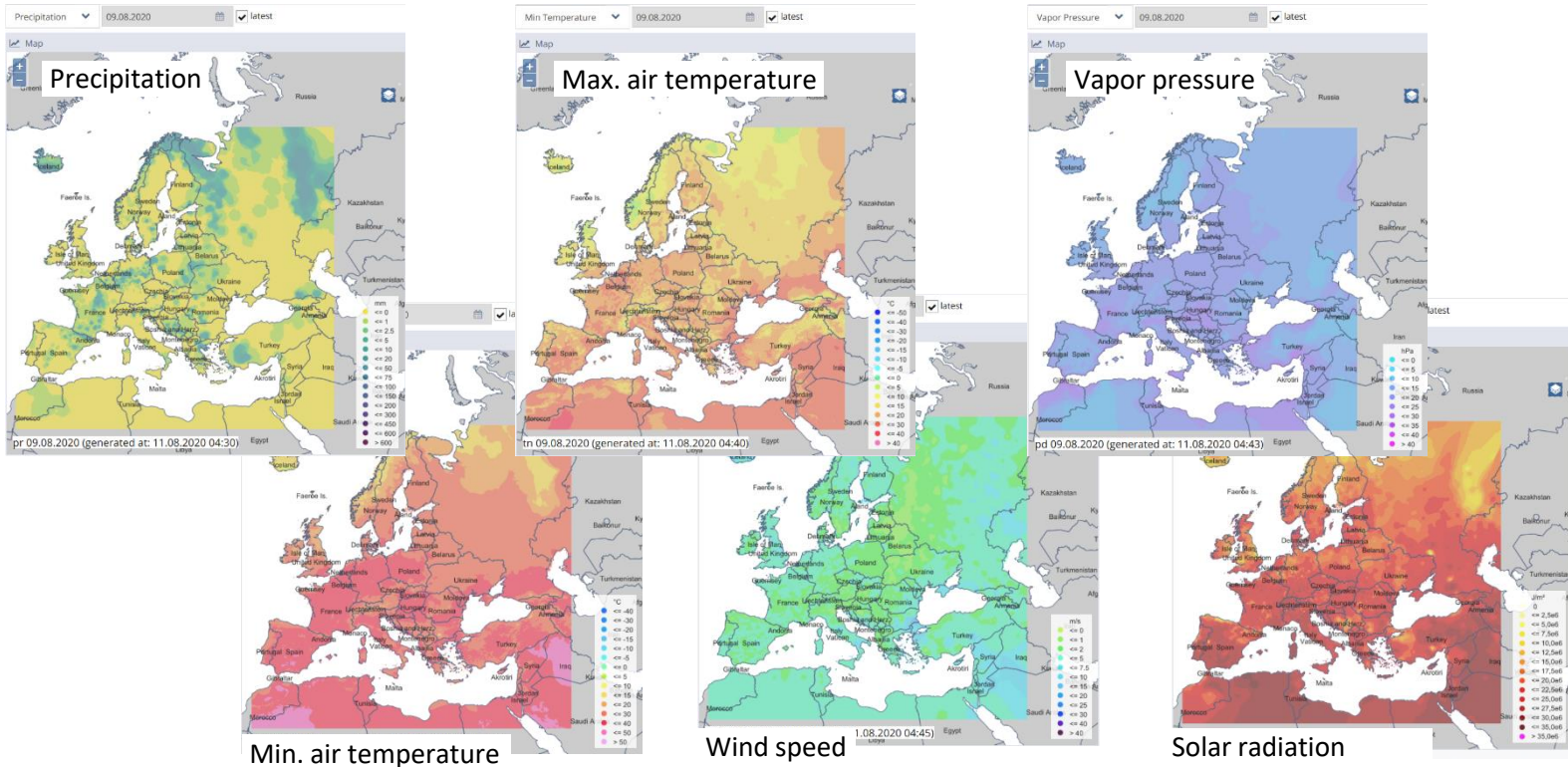
Number of stations:

- Total: 44641
- Active: 15459
 - thereof 1324 virtual stations
- Inactive: 29182
 - thereof 9308 virtual stations



Interpolated grids for LISFLOOD model

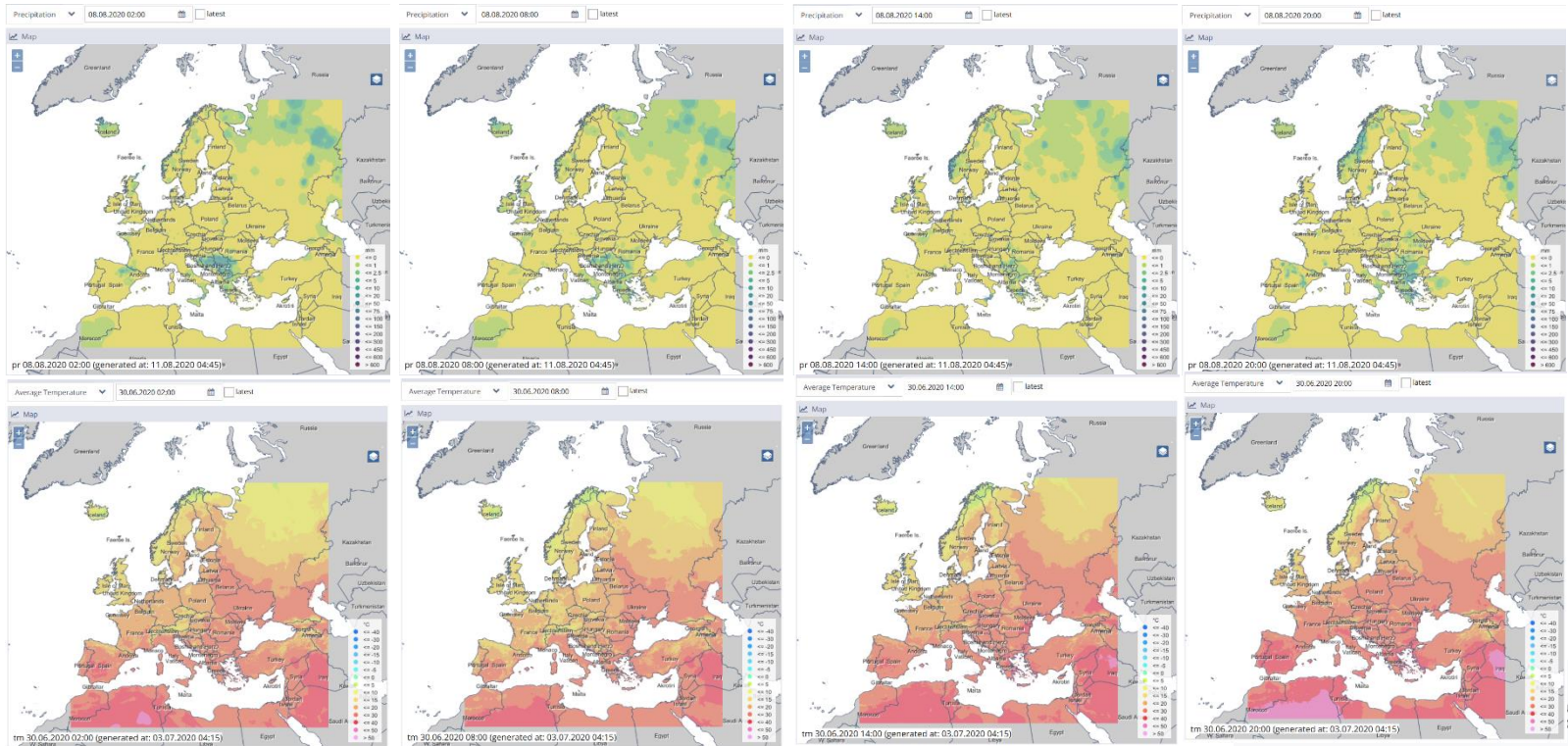
- Daily grids produced by CEMS-MDCC





Interpolated grids for LISFLOOD model

- 6-hourly precipitation and temperature grids produced by CEMS-MDCC





Emergency
Management

Recent Evolution

- Integration of new data providers
 - Agencia Estatal de Meteorología (AEMET, Spain)
 - Federal Hydrometeorological Institute (FHMZ, Bosnia-Herzegovina)
 - National Environmental Agency (LEPL, Georgia)
 - Royal Netherlands Meteorological Institute (KNMI, The Netherlands)
 - Swedish Meteorological and Hydrological Institute (SMHI, Sweden)





Recent Evolution

- Improvements in data processing to take changing reporting behaviour into account, e.g. precipitation observations from ‘odd’ dates: 12hourly aggregated at 3 UTC or 15 UTC (common 6 & 12 UTC) → make more data available for gridded products
- Data license for data providers who are not EUMETNET-members is now available



Ongoing and planned developments

- Avoid duplicate stations in grids
(same stations from different data providers, due to redundant data deliveries)
→ improving the quality of gridded data products
- Improve performance of grid creation
(faster pre- and post-processing, interpolation)
→ getting ready for future higher spatial resolution
(1.8 x 1.8 km² instead of 5 x 5 km²)



Ongoing and planned developments

- Integration of new data providers:
 - Confirmed:
 - Civil Protection Agency of the Lazio Region (Lazio/Italy, EFAS partner)
 - Hydrological Information Centre (Flanders /Belgium, EFAS partner)
 - Israel Meteorological Service (Israel)
 - Data request ongoing:
 - Országos Meteorológiai Szolgálat (Hungary)
 - MeteoFrance (France)



Ongoing and planned developments

- Integrate more parameters and stations from existing data providers, e.g.
 - solar radiation from DWDSynop FM94+FM12
 - DWDSynop WIGOS-ID stations in Israel
 - additional parameters available from ARPASIM in new open data portal
 - many more stations available from ARSO new data portal
- If you have additional meteorological observation data available:
Please contact us, we are looking forward to work with you !



Emergency
Management

How to contact CEMS-MDCC

Contact details

Email: efas.mdcc@dwd.de

Markus Ziese (CEMS-MDCC/DWD), phone: +49 69 8062 2973

Armin Rauthe-Schöch (CEMS-MDCC/DWD), phone: +49 69 8062 3087

For questions in relation to the data license:

Peter Salamon (JRC Ispra), phone: +39 0332786013,

email: peter.salamon@ec.europa.eu

Contact us



Emergency Management

KISTERS AG

Pascalstraße 8+10

D-52076 Aachen

Phone +49 2408 9385-0

Fax +49 2408 9385-555

info@kisters.de

www.kisters.de

Deutscher Wetterdienst

- GPCC -

Frankfurter Straße 135

D-63067 Offenbach am Main

Phone +49 (0)69 / 8062 - 2973

efas.mdcc@dwd.de

www.dwd.de

File name:

EFAS-AM2020_CEMS_MDCC_V3.2.pptx

Creation date:

22/10/2020

Author:

CEMS-MDCC

